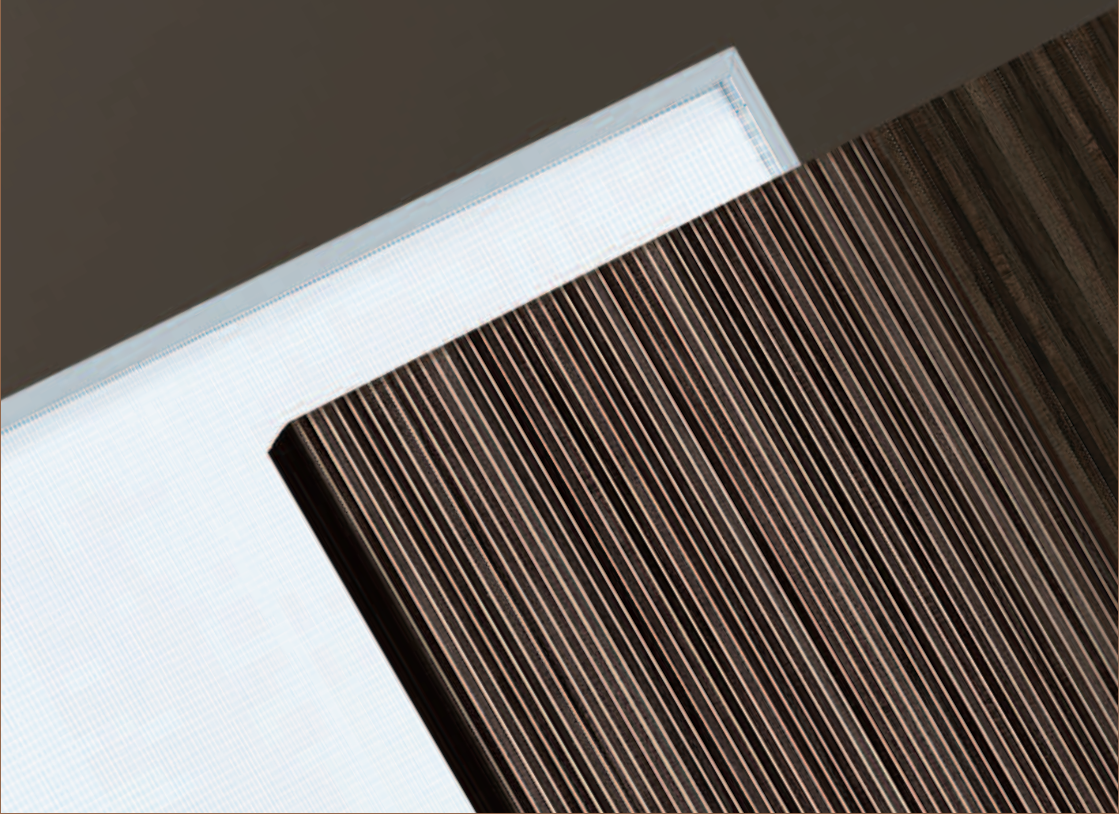




LUMINOSO

WOOD DESIGN IN A NEW LIGHT

Light solutions

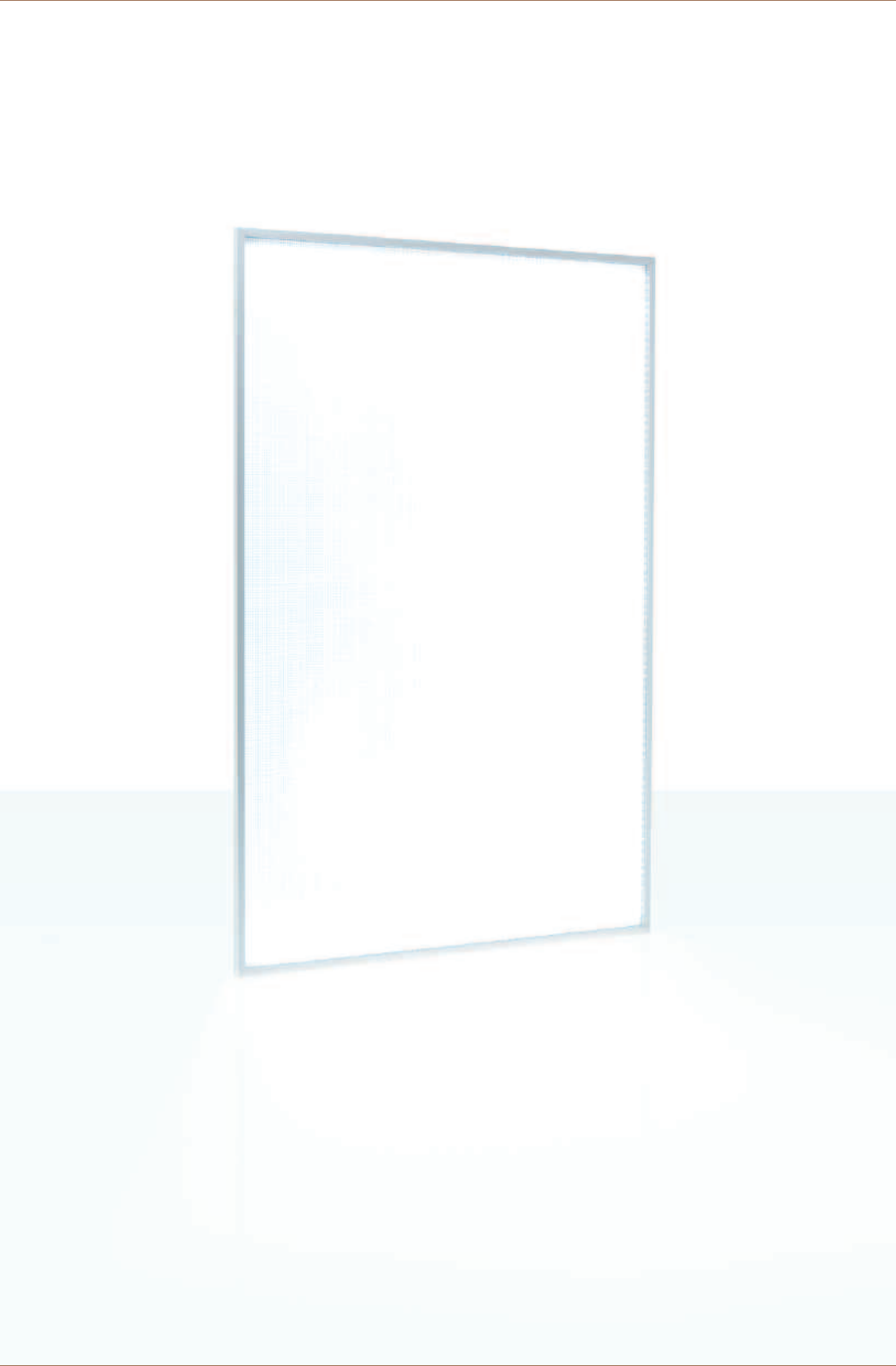


You have a choice –
and every opportunity.

**With LUMINOSO, something completely new has come about:
Wood and light combines to a new creative unit.**



For more application opportunities of this fascinating combination there are now also different light systems on LED basis to choose from, which illuminate LUMINOSO independent of exterior light sources and create fascinating effects depending on the intended use. Do you want to get logos and graphics to shine with LUMINOSO or do you need colour for your presentation? LUMINOSO will provide you with the right light system as you desire. Even moving images through the wood are possible with LUMINOSO Lighting Video.



LUMINOSO

Lighting Dimension Properties

LUMINOSO Lighting Dimension not only impresses with its compact design, but also its format. This flat lamp with white LED input on 4 sides proves its size up to an available dimension of 3000 x 1250mm.



Properties

Ultra flat special acrylic board for perfect integration into supporting structure

Extremely stable light solution facilitates transport, handling and integration

Light input through energy saving, highly efficient LED technology

Selected light colour for best contrast display Homogenous illumination for backlighting of graphics and logos

Minimum heating prevents complex ventilation solutions

No IR/UV radiation

Low voltage on lamp increases personal protection

Life span 50,000 minimises maintenance expense

Dimmable for adjustment to light situation

Standard colour white (optional colour solutions)

Available in different dimensions



LUMINOSO

Lighting Dimension

Technical data

Material	Special acrylic board (8mm) with circumferential aluminium profile
Dimensions HxWxD (mm)	3000x1250x12 3000x1000x12 3000x500x12 2500x1000x12 2500x500x12 1500x1000x12 1500x500x12 1000x1000x12 1000x500x12
LED	4-sided input 3 Chip LED, 12V
Light colour	7000K (cold white)
Capacity (W)	50 – 140 depending on dimensions
Light yield (lm/Watt)	approx. 50
Luminous density (cd/m²)	up to 1200 depending on dimensions
Colour	White, optional fixed colours
Control	On/off via switch, optional Dimming via phase dimmer, optional On/off via motion detectors
Application	Interior
Temp. range (°C)	-20 to +40 °C
Life span (h)	> 50.000
Mounting	Rear panel made of aluminium plate-finished
Supply	12 V DC supply included

LED

Light colour in Kelvin (K)

Luminous flux (lm)

Light yield (lm/W)

Luminous density [cd/m²]

LED (Light Emitting Diodes) are based on semi-conductor connections, which directly transform voltage to light.

colour temperature, describes the colour impression: < 3300K: yellowish, from 3300K to 5000K: neutral white, > 5000K: daylight white.

Light capacity of a lamp, in lumen.

The light yield is the luminous flux of a lamp with reference to its electric power consumption (=energy balance).

Brightness impression which an illuminated or luminescent area conveys to the eye.



LUMINOSO

Lighting Modular

Properties

LUMINOSO Lighting Modular is an individually extendable illumination system for backlighting LUMINOSO. This way you will use light exactly where it is needed for graphics and effects.



Properties

- Square LED tile for any horizontal and vertical extension
- 100 highly efficient LEDs per tile ensure a homogeneous backlighting of LUMINOSO
- The energy saving LED technology with its minimum heating up does not require elaborate rear ventilation
- Selected light colour for optimum contrast display
- No IR/UV radiation
- Low voltage on lamp increases personal protection
- Life span 50,000 h
- Optionally dimmable for adjustment to light situation
- Standard colour white
- Attachment directly via 4 borings per light tile or without tools with spacer on optional mounting plate



LUMINOSO

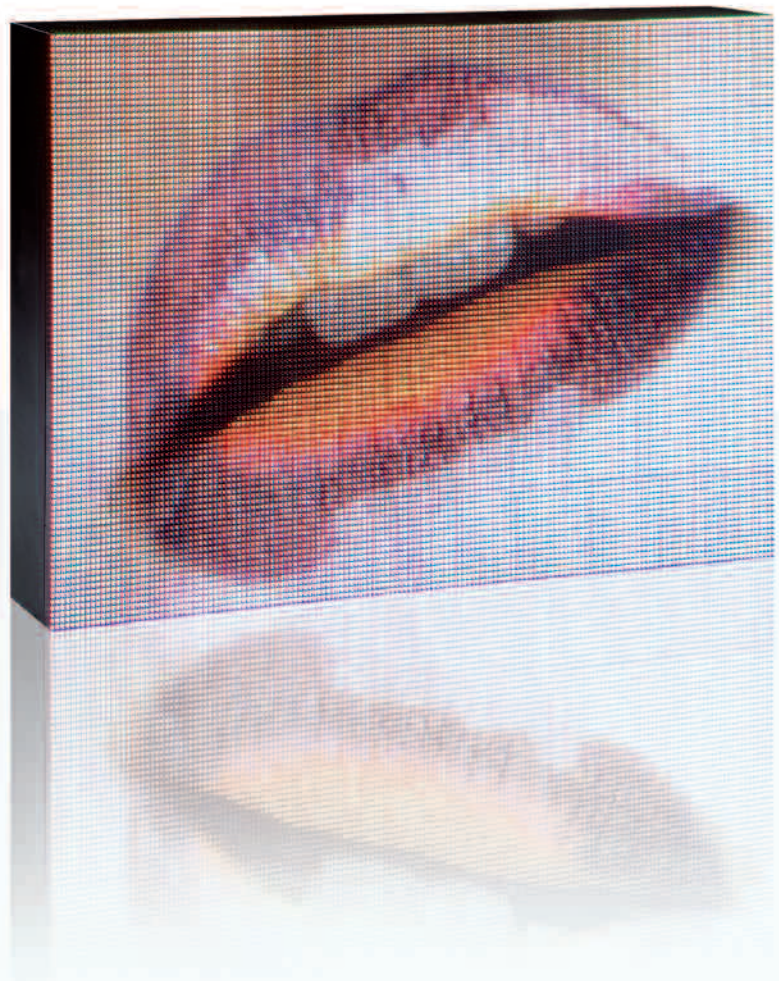
Lighting Modular

Technical data

Material	Print with LED with slot-in system for vertical and horizontal extension
Dimensions HxWxD (mm)	250x250x12
LED	10x10 matrix, 100LED, 24V Angle of reflected beam 120°
Light colour	6500-7500 K, (Ra85)
Power consumption (A)	400mA/tile
Light yield (lm/Watt)	30
Colour	White
Control	On/off via switches, optional dimming via PWM dimmer, optional on/off via motion detectors
Application	Interior
Temp. range (°C)	-20 to +60 °C
Life span (h)	50.000
Mounting	4 borings per light tile or without tools with spacer on optional mounting plate
Supply	Excl. 24V DC power supply units

LED
Light colour in Kelvin (K)
Light yield (lm/W)

LED (Light Emitting Diodes) are based on semi-conductor connections, which directly transform voltage to light. colour temperature, describes the colour impression: < 3300K: yellowish, from 3300K to 5000K: neutral white, > 5000K: daylight white. The light yield is the luminous flux of a lamp with reference to its electric power consumption (=energy balance).



LUMINOSO

Lighting Video Properties

LUMINOSO Lighting Video transforms wood to an LED video wall for dynamic backlighting of logos, images, digital presentations and films. With all advantages of LED technology: high luminous density, long life span, ...



Properties

Video lamp consisting of LED-equipped display panels with comprehensive control

LED dot matrix display

Universal playback format for images and videos

High luminous densities > 5000cd/m²

Direction and script directly at the connected

PC (Ethernet Interface) via included software package for comprehensive configuration and setting options

Energy-saving, highly efficient LED technology

Supply via line voltage

Life span 50,000 minimises maintenance expense

Robust design in metal housing

Detail planning required

LED

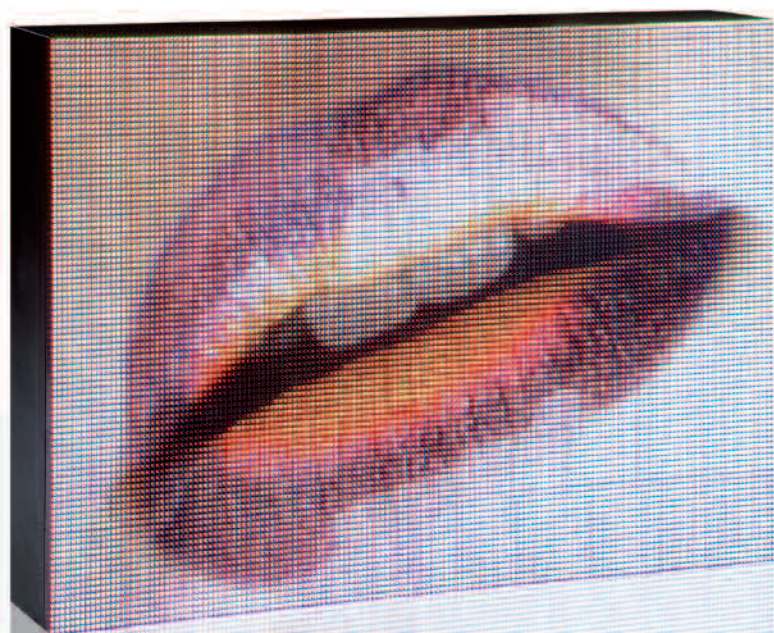
LED (Light Emitting Diodes) are based on semi-conductor connections, which directly transform voltage to light.

Luminous density [cd/m²] Brightness impression which an illuminated or luminescent area conveys to the eye.

LUMINOSO

Lighting Video

Technical data



Material	Housing sheet steel zinc-coated
Dimensions HxWxD (mm)	Multiple of 136x272 (module size) Depth depending on housing >170mm
LED	Pixel size: approx. 5mm, 3 in 1SMD Chip LED, pixel pitch 8.5mm Angle of reflected beam min. 140°/70° (h/v)
Capacity (W)	880-1000/m ²
Luminous density (cd/m²)	> 5000
Colour	RGB 16.8 Mio Colour grading at least 1.9 billion
Resolution	16x32 pixel per module
Control	Control via PC Data input: TCP/IP, RJ45 or optical fibre formats: MPG, AVI, WMV, RM, video-capable, comprehensive software package included
Application	Interior
Temp. range (°C)	-20 to +60 °C
Life span (h)	100,000 (50% brightness)
Supply	230V /50Hz included
Accessories	Recipient card, PC sender card and software

LED (Light Emitting Diodes) are based on semi-conductor connections, which directly transform voltage to light.
Luminous density [cd/m²] Brightness impression which an illuminated or luminescent area conveys to the eye.

Prizeworthy: LUMINOSO persuades design juries

At the red dot design awards 2009, LUMINOSO received the coveted prize in product design from an international jury of top-class experts. With over 7,000 entries, the red dot design award is one of the leading and largest design competitions worldwide. Since 1955, excellent design quality has annually been selected by the Design Zentrum Nordrhein Westfalen in Essen and officially recognised in an exhibition.



In addition, LUMINOSO has now also been nominated for the highest official German award for design, the Design Award of the Federal Republic of Germany. No other design prize makes such high demands on the participants and is only awarded to products that have already been distinguished with a national or international prize.



reddot design award
winner 2009



www.luminoso.at

Litwork GmbH

Güttelestraße 7a | 6850 Dornbirn | Austria

T +43 (0)5572 372960-21

F +43 (0)5572 372960-44

office@luminoso.at